

Building Bridges to Resilience: Identifying International Good Practice Principles in Applying Health Promotion to Emergency Preparedness and Response

Workshop

Overview

Purpose and Objectives

Purpose

Provide participants opportunity to share their experience and explore the application of health promotion strategies to reduce the impact of emergencies and support long-term recovery.

Objectives

- Provide an overview of the project and associated work packages
- Explore the role of health promotion in the planning for, response to and recovery from emergencies
- To share, discuss and identify the application of health promotion principles across the emergency management continuum
- Identify and share challenge to integrating health promotion in disaster risk reduction and preparedness plans
- Consider strategies for the integration of health promotion principles
- Highlight existing good practice and literature to support NPHIs in the application of health promotion in the planning for, response to and recovery from emergencies

Overview Programme

0800 - 0810hrs - Overview of PHAC2 project

0810 - 0825hrs - Health Promotion in emergency preparedness

0825 - 0835hrs - Health Promotion during emergency response

0835 - 0850hrs - Health Promotion in recovery and long-term resilience

0850 - 0855hrs - Summary and Close



Building Bridges to Resilience: Identifying International Good Practice Principles in Applying Health Promotion to Emergency Preparedness and Response

Project Overview

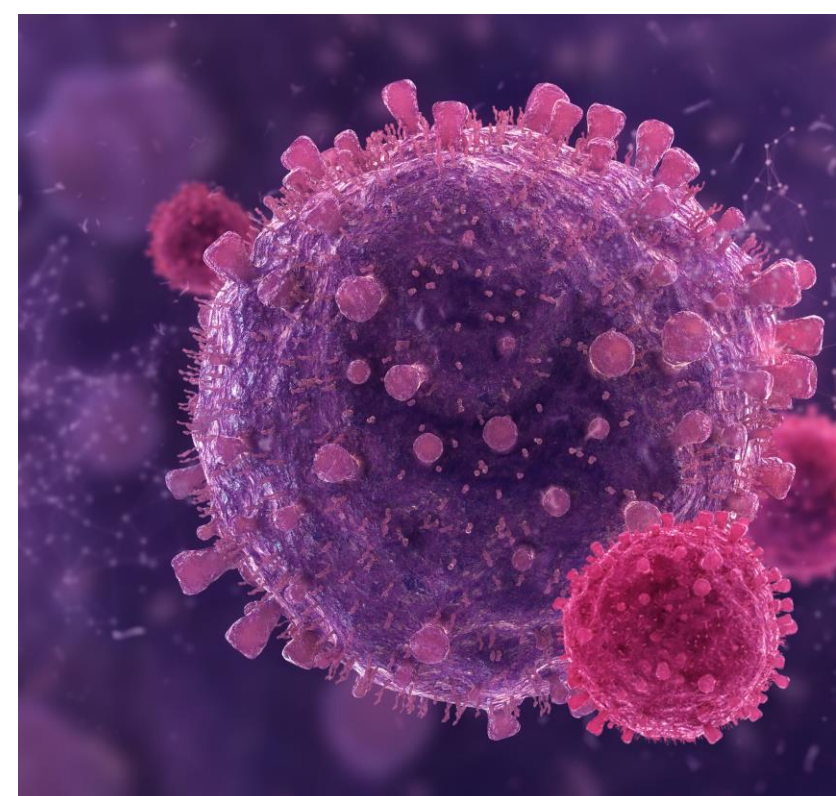
Project Overview

Purpose

The project aims at collecting, reviewing and analyzing practice-based evidence derived from programs and actions implemented in real-life settings prior to and during emergencies to guide and improve preparedness and response by integrating health promotion and community engagement as a principle of good practice.

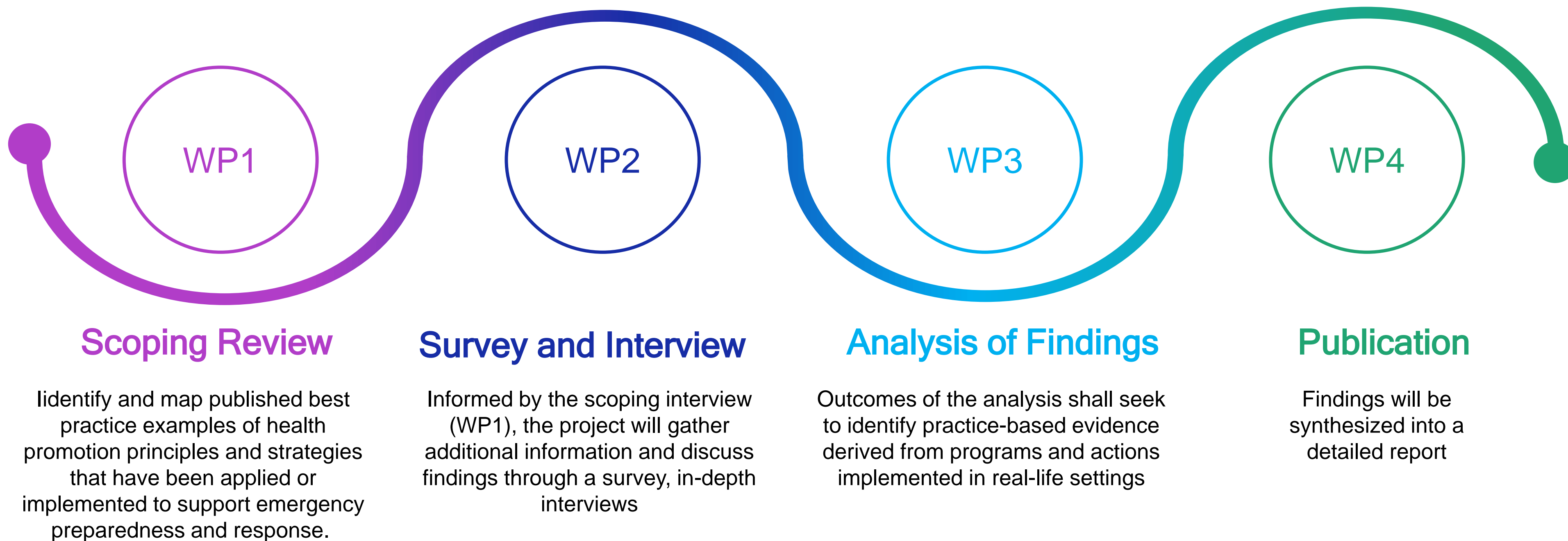
This is to be achieved through:

1. Collating, reviewing and analysing practice-based evidence to identify good-practice principles
2. Complement the current available research-based evidence by linking scientific evidence to field experience.
3. Increase IANPHI's capacity to consider and advocate collectively for more health promotion considerations



Work Packages

Overview



Building Bridges to Resilience: Identifying International Good Practice Principles in Applying Health Promotion to Emergency Preparedness and Response

An Introduction to Work Package 1 – Scoping Review

Work Package 1

Research Team

WP1 is lead by academics and researchers at the Health Promotion Research Centre, University of Galway , Ireland

Designated as a WHO Collaborating Centre for Health Promotion Research in 2009, Health Promotion Research Centre (HPRC) at the University of Galway has an active multidisciplinary research programme, and collaborates with regional, national and international agencies on the development and evaluation of health promotion interventions and strategies.

<div>Dr Mary Jo Lavelle Assistant Professor Discipline of Health Promotion Health Promotion Research Centre College of Medicine, Nursing & Health Sciences University of Galway</div>	
<div>Dr Catherine Anne Field Assistant Professor Discipline of Health Promotion Health Promotion Research Centre College of Medicine, Nursing & Health Sciences University of Galway</div>	
<div>Dr Geraldine McDarby Public Health Consultant Public Health Scotland Health Promotion Research Centre College of Medicine, Nursing & Health Sciences University of Galway</div>	



OLLSCOIL NA GAILLIMHE
UNIVERSITY OF GALWAY

Scoping Review

Aim

Work package 1 utilises a scoping review methodology:

- To identify and map published best practice examples of health promotion principles and strategies that have been applied or implemented to support emergency preparedness and response.
- To frame and refine the search, collection, and analysis of case studies.
- To consider the full breadth of the emergency management continuum from prevention and mitigation to preparedness and response.



Scoping Review

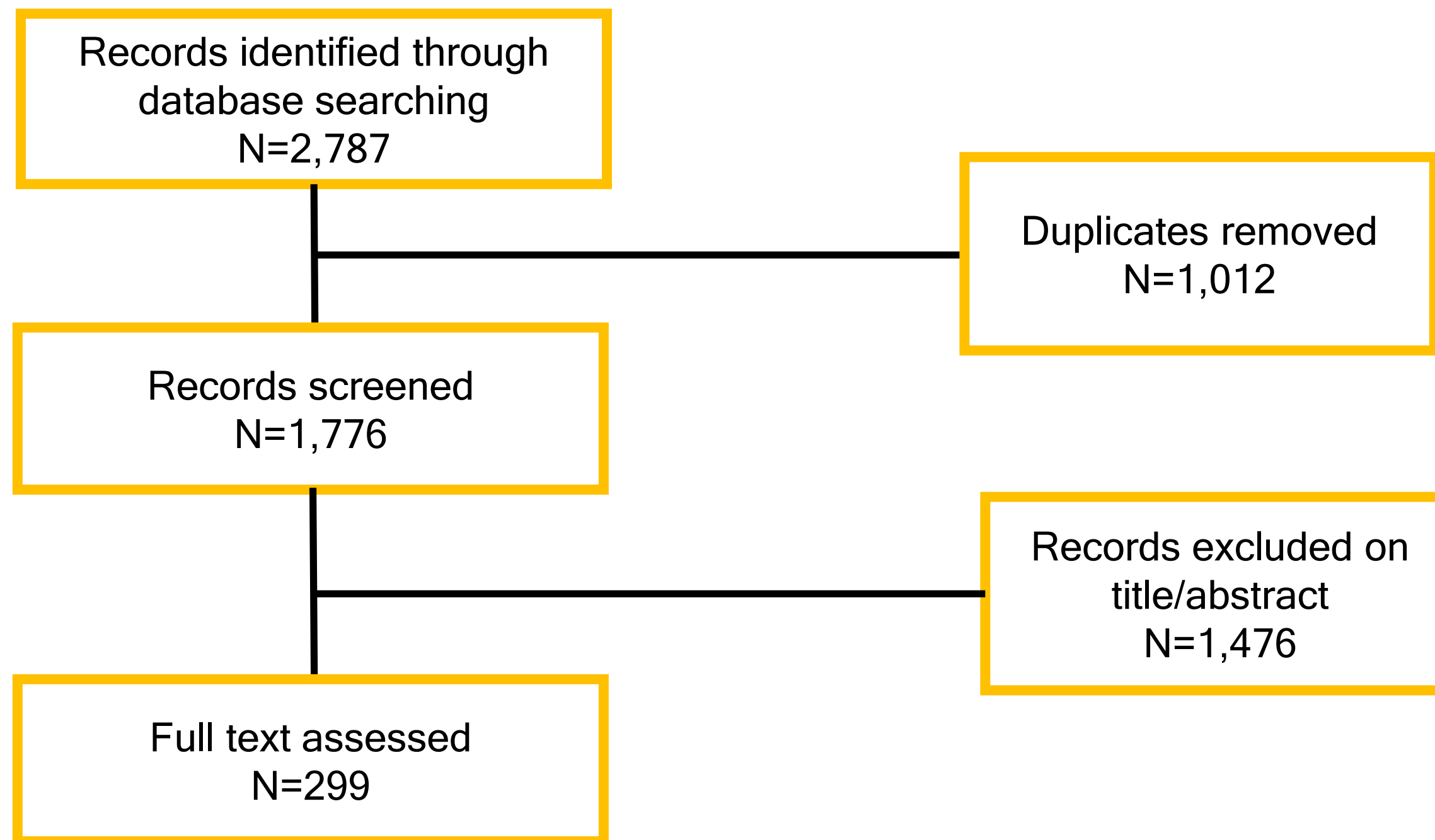
Methodology

This scoping review follows the methodological framework outlined by Arksey and O'Malley (2005) and refined by Levac, Colquhoun, and O'Brien (2010).

The review is conducted in accordance with the Preferred Reporting Items for Systematic Reviews and Meta-Analyses extension for Scoping Reviews (PRISMA-ScR) guidelines to ensure comprehensive and transparent reporting.

Search Strategy

- **Peer-review Literature Databases:** A systematic search conducted across electronic databases, including Medline, PubMed, Scopus, and CINAHL (Phase I)
- **Grey Literature:** To capture non-peer-reviewed evidence, searches will include grey literature databases of key IANPHI and other organizations with an identified role in emergency preparedness and responses (Phase II)



PRISMA Flowchart Phase I: peer-review literature database



Peer-review literature database search

Phase 1* Initial Impressions

Peer reviewed literature database* search:

- 2,787 records (1,012 duplicates)
- 1,476 excluded on Title/Abstract screening
- Full text review underway 299

Initial Impressions:

- Emergency setting: COVID
- Emergency phase: Response
- Health Promotion strategy: Health communication
- Target population: vulnerable and/or marginalized group

**Phase II: Grey Literature search and screening to commence April 2025*

Building Bridges to Resilience: Identifying International Good Practice Principles in Applying Health Promotion to Emergency Preparedness and Response

Workshop



Administration

Format and Timing

- Split into **syndicates**.
- A scribe is to be identified by the syndicate who will **make notes** on the paperwork provided.
- **Please ensure** all paperwork is handed in at the end of the session
- **3** discussion areas.
- Please **keep within the time schedules**.

Administration

Points to consider

Our communications should be guided by our values.

Please can we...

- Work together, invite the views of our colleagues and share information that would be helpful.
- Listen to others and have one conversation at a time.
- Be open to new concepts and ideas.
- Ask questions to clarify if we're not sure about something.

- In discussion you may wish to consider;

- . Sharing your experience of risk communication strategies to ensure your communities and educated and empowered
- . Demonstrating how you have established, developed and contributed to partnership working to strengthen emergency preparedness
- . Exploring the methods you have adopted to ensure inclusivity of activity particularly for vulnerable populations.
- . Describing actions undertaken for policy advocacy to embedded strategies for Health promotion
- . Sharing examples of targeted initiatives and their outcomes.
- . Demonstrating the role of public health education campaigns
- . Exploring how communities and local organisations have contributed to the delivery of health promotion strategies
- . Exploring the barriers to implementing health promotion strategies and examples of how they have been overcome.

*You are **NOT** constrained by the areas for discussion OR the aspects listed..*

Workshop

In your syndicate groups

- . Please could you discuss and start to identify health promotion outcomes and strategies you feel are crucial in preparing communities for an emergency.
- . Please could you reflect on health promotion outcomes and strategies which you (or know to have been) utilized during the response phase to an emergency supported by examples.
- . Please could you consider and then discuss ways of incorporating health promotion outcomes and strategies into the recovery phase of an emergency in your own community and organisation.



Workshop

Outcomes

- Following the workshop, identified learning and evidence shall be collated to inform the PHAC 2 Project *'Building Bridges to Resilience: Identifying International Good Practice Principles in Applying Health Promotion to Emergency Preparedness and Response'*.
- Outcomes of the workshop shall further seek to develop and inform survey and semi-structured interviews to be conducted as part of the PHAC2 project and support the identification of grey literature for the study
- Discussion which has been captured throughout the workshop shall be distilled into a report which shall be shared with the PHAC2 Steering Committee.



N.B You may edit and amend responses to the survey following submission until the deadline.

We need your help!

Grey Literature Survey

- The survey aims to identify and share grey literature that demonstrates the application of Health Promotion best practice principles in the planning, response, and recovery phases of emergencies.
- The survey can be accessed through scanning the following QR code. Alternatively, the IANPHI Secretariat is to share details on accessing the survey through contact with the National Focal Points.
- Deadline for response is **9th of May 2025**

Building Bridges to Resilience: Identifying International Good Practice Principles in Applying Health Promotion to Emergency Preparedness and Response

Closing Remarks

Contact Details:

Dr Tom Fowler (Deputy National Director Health Protection and Screening Services, Public Health Wales) - Tom.Fowler@wales.nhs.uk

Daniel Rixon (Emergency Preparedness, Resilience and Response Manager, Public Health Wales) Daniel.Rixon@wales.nhs.uk
