

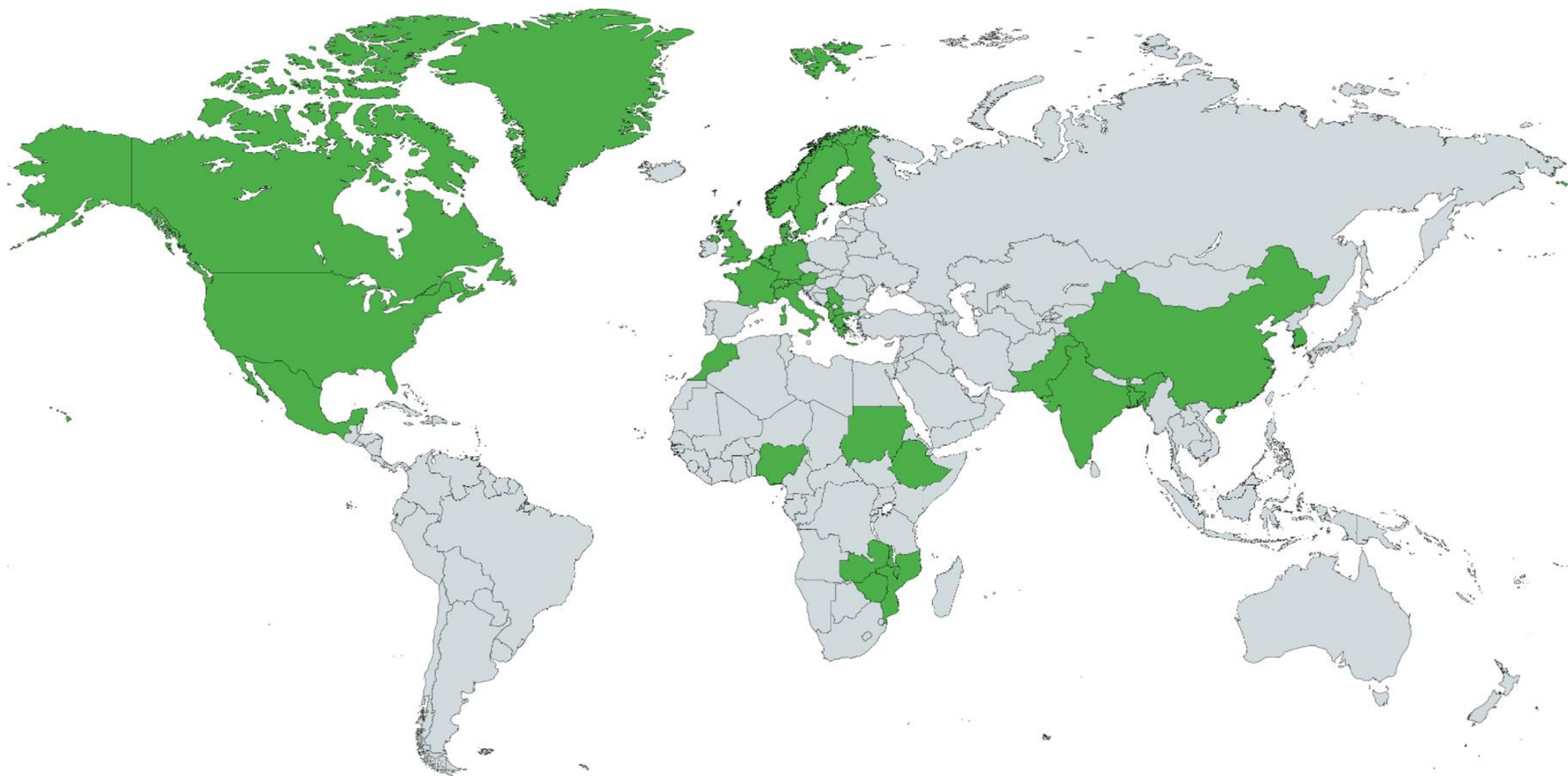
The IANPHI Climate Change Thematic Committee

Engaging NPHIs as key climate actors

Dr Sébastien DENYS

Ianphi, Chair of the Committee on Climate Change and Health

Director Environmental and Occupational Health
Santé publique France



Engaging and supporting NPHIs as key climate actors

The initial Roadmap (2021)



IANPHI

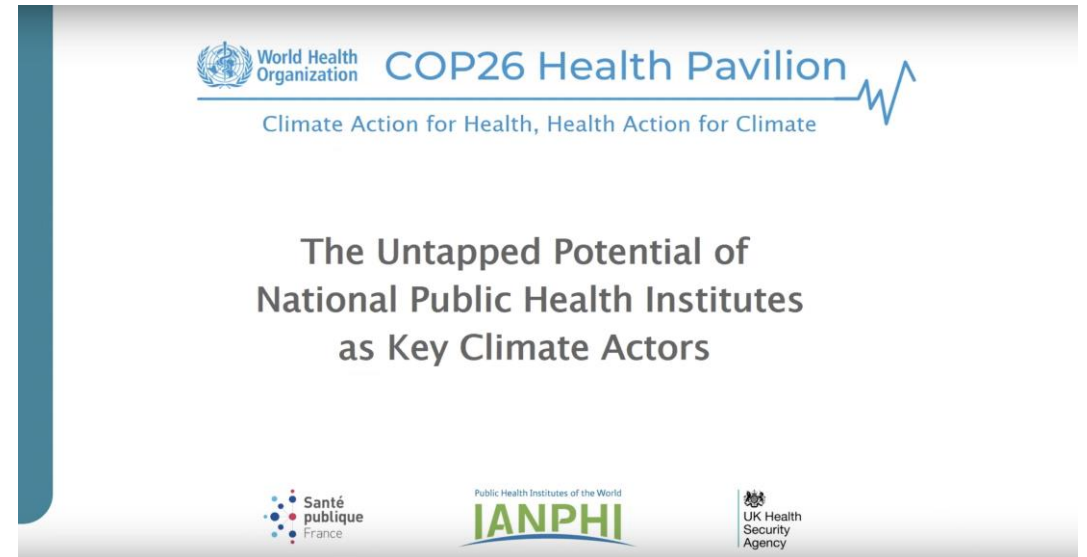
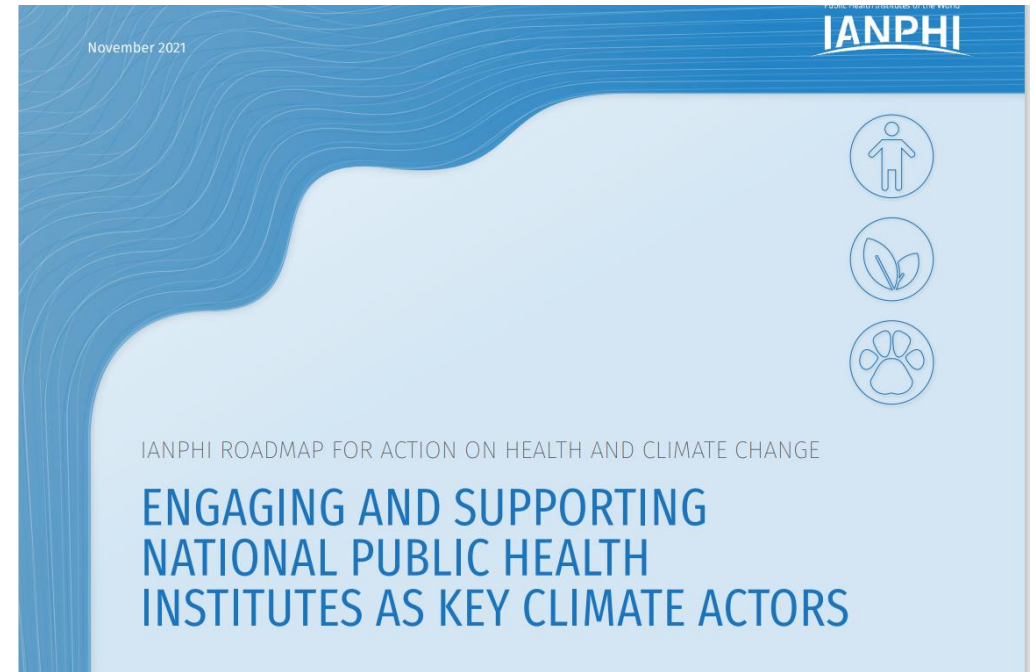
832 followers

6mo •

...

In a joint statement, the G7 Health Ministers expressed their support for the IANPHI Roadmap for Action on Health and #Climate Change and for the key role of national public health institutes in #ClimateAction

👉 Our story and link to the IANPHI Roadmap: <https://fal.cn/3oSQ2>

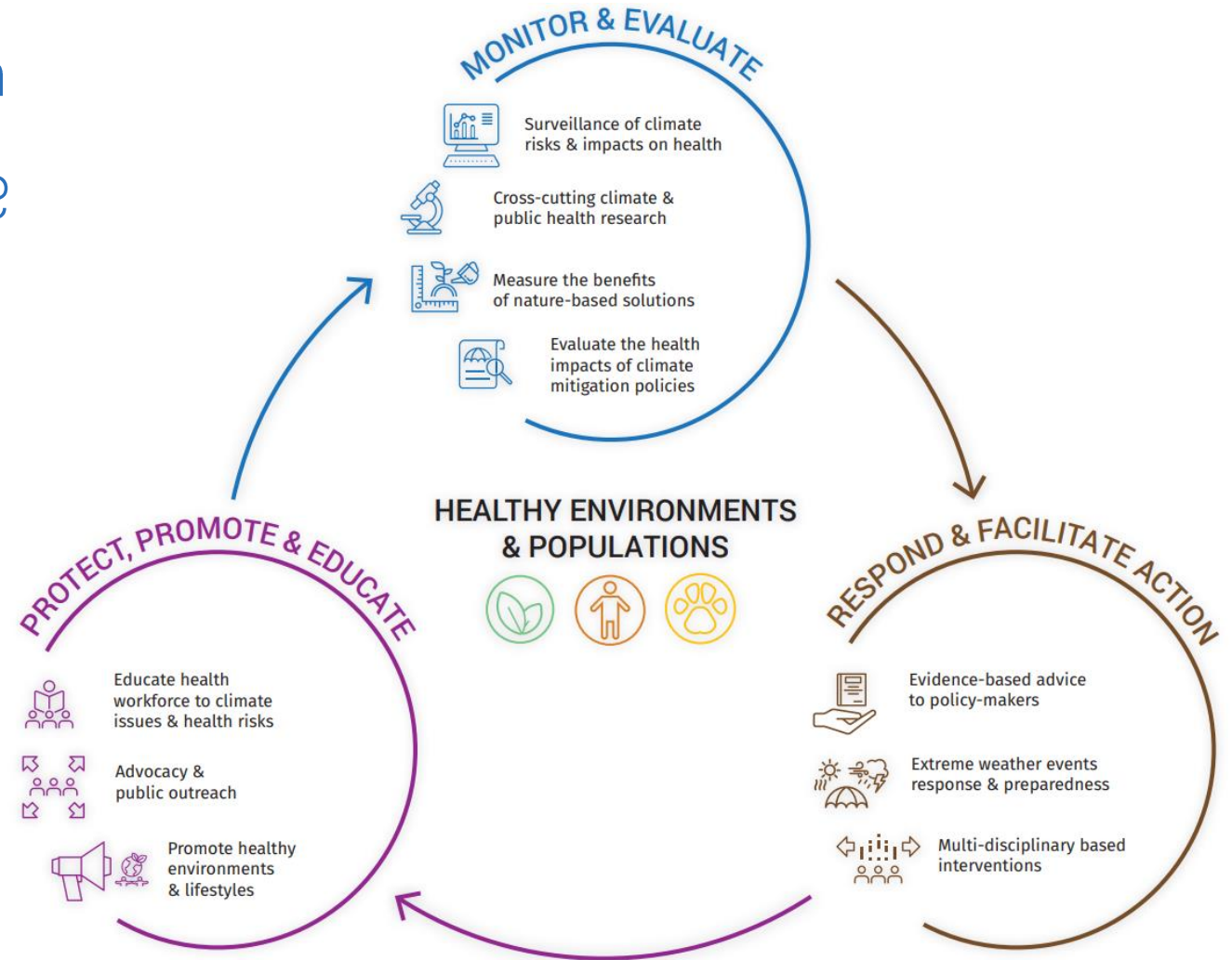


Priorities for NPHIs and the committee

- **Advocate** for strengthening the capacity of NPHIs to contribute effectively to climate and biodiversity research, policies and action
- **Enhance capacity, competence and training** through peer-to-peer support and knowledge sharing between NPHIs.
- **Increase collaboration with international and regional** organizations active in the fields of public health and climate change
- Support the greening of public health services
- **Monitor progress in the NPHIs' involvement** in climate change policies through key indicators

Climate Change and Health

How NPHIs can contribute ?



2024 : NPHI and Extreme Weather Events

Case studies :

Canada – Forest Fire Impacts
Germany – Heat-Related Health Effects
Macedonia – Response to climate induced flooding
France – Response to Hurricane Irma in the French West Indies
UK – Adverse weather and Health Plan
Mozambique – Seasonal Risk Mapping and Disease Forecasting
Zambia – Response to Cholera Outbreak
Netherlands – Mapping vulnerable populations
Nigeria – Risk communication for EWE related diseases
Austria – Heat Health Action Plan
Finland - Climate Change Adaptation Plan
India – National Programme on Climate Change and Human Health



NOVEMBER 2024

Key Indicators : the case of Heat-Health Metrics

HEAT : one of the most health impacting effect of climate change

Intensification of the heat and heatwaves worldwide (IPPC 2022)

- increase in the frequency, intensity, geographical spread of hot days and heat waves
- severe impacts on ecosystems and human societies

Multiple health effects

- hyperthermia, heat stroke, dehydration
- respiratory, renal and cardiovascular effects
- cognitive impairment
- accidents
- psychiatric disorders
- pregnancy
- potential disruption of the health care system

A real need to strengthen the involvement and capacities of NPHIs

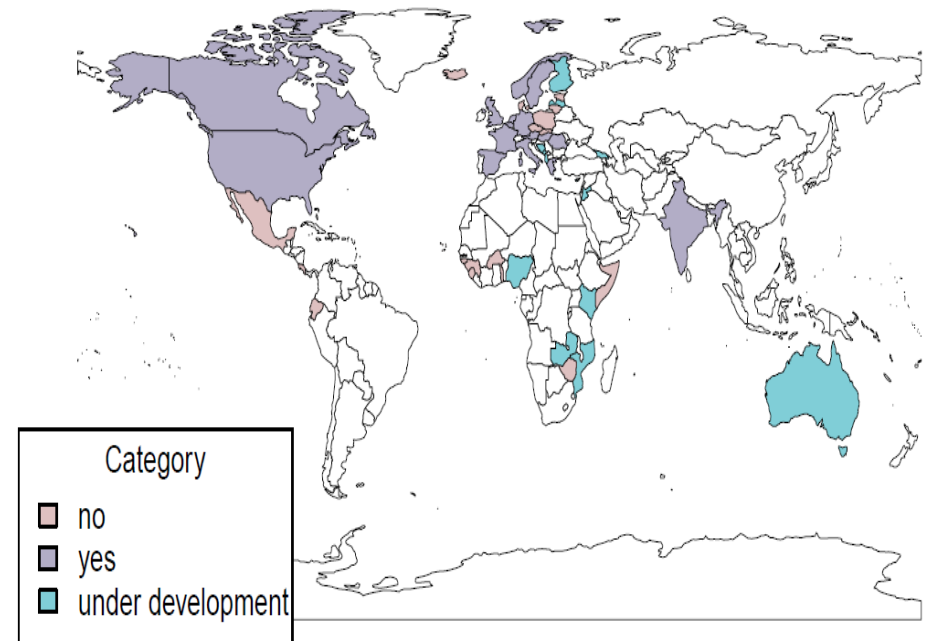
Method

- survey sent to 120 IANPHI members and 6 non-IANPHI members between May and July 2024
 - online form
- ⇒ 49 complete and 10 incomplete responses

Among the respondents

- only 18 NPHIs are monitoring heat impacts, 18 are currently developing a program, and 19 are not working on heat
- 7 NPHIs (in Europe, Africa and South America) did not identify heat as a priority
- great diversity of methods, indicators, reporting... among the NPHIs monitoring the health impacts

Is your NPHI currently monitoring any heat-related health impacts?



Upcoming milestones Heat-health metric

- Upcoming technical presential workshop – June 2025
 - Standardization of heat-health metrics
 - Place : London, UK
 - WMO, lanphi, Wellcome Trust and Lancet Countdown, Santé publique France and RKI
- Upcoming presential committee in November 2025 back to back to One Health Sustainable Forum
 - Adopt a frame for NPHIs for heath-health metrics
 - Place : Lyon, F
 - lanphi, AFD, EEA, Santé publique France and RKI

Engage Key Partners



GLOBAL **HEAT** HEALTH
INFORMATION NETWORK



World Health
Organization



WORLD
METEOROLOGICAL
ORGANIZATION



**EUROPEAN
CLIMATE AND HEALTH
OBSERVATORY**



LANCET COUNTDOWN:
TRACKING PROGRESS
ON HEALTH AND
CLIMATE CHANGE

Events and webinars



WEBINAR: DEVELOPING INDICATORS TO DRIVE RELEVANT ACTION ON CLIMATE CHANGE AND HEALTH

November 14, 2022 at 9am EST | 3pm CET

PANELISTS



Dr. Marina Romanello
Executive Director
The Lancet Countdown



Dr. Aleksandra Kazmierczak
Expert, Environment, Human Health & WellBeing
European Climate and Health Observatory



Dr. Giovanni Leonardi
Head of Environmental Epidemiology
UK Health Security Agency



Dr. Shubhaya Saha
Senior Advisor
Office of Climate Change and Health Equity
U.S. Department of Health
and Human Services



Dr. Mathilde Pascal
Epidemiologist and Project Manager
for Air, Climate and Health
Santé publique France



Dr. Aakash Shrivastava
Additional Director and Head
Centre for Environmental Health, Occupational
Health, Climate Change and Health
National Centre for Disease Control, India

MODERATED BY



Dr. Svenja Matusall
Research Associate
Robert Koch Institute
Germany

Upcoming webinar in 2nd semester 2025 on Exterme weather event

Thanks for your attention

and all the committee members and lanphi secretariat