

IANPHI

# ANNUAL MEETING

NOVEMBER 30 - DECEMBER 2, 2022 | HYBRID

HOSTED BY



Folkhälsomyndigheten  
PUBLIC HEALTH AGENCY OF SWEDEN

Pandemics, Conflicts, Climate Change: New  
Roles and Challenges for National Public  
Health Institutes

---

Session 5

Roundtable discussion: NPHIs' strategies for  
investing in health promotion and equity

December 2, 13h30-15h00

IANPHI  
**ANNUAL MEETING**

NOVEMBER 30 - DECEMBER 2, 2022 | HYBRID

HOSTED BY



Denise Cardo,  
Acting Center Director, Center  
for Global Health, US CDC

Friday, December 2

# Keynote Speech: U.S. CDC's Health Equity Science and Intervention Strategy

# Overview

- Health Equity Language
- CDC's CORE Goals
- Select Programs & Initiatives



# Health Equity



## Health Equity

The state in which everyone has a fair and just opportunity to attain their highest level of health.

## Health Equity Science

Investigates the underlying contributors to health inequities and builds an evidence base that will guide action across the domains of program, surveillance, policy, communication, and scientific inquiry to move toward eliminating, rather than simply documenting, inequities.<sup>4</sup>

<sup>1</sup><https://www.healthypeople.gov/2020/about/foundation-health-measures/Disparities>

<sup>2</sup><https://www.rwjf.org/en/library/research/2017/05/what-is-health-equity-.html>

<sup>3</sup><https://www.healthypeople.gov/2020/about/foundation-health-measures/Disparities>

<sup>4</sup><https://www.cdc.gov/healthequity/index.html>



# Strategies to Advance Health Equity

- Understand how differences in access affect communities
- Develop and implement approaches to address these differences
- Consider their impact on different groups
- Mobilize community engagement and support
- Identify inequitable conditions in the social environment
- Change community dynamics to support health
- Implement public health policies that address underlying causes of health inequities



# CDC CORE Health Equity Science and Intervention Strategy

- CDC has launched an agency-wide strategy that aims to integrate health equity into the fabric of all we do.
- Vision: All people have the opportunity to attain the highest level of health possible.

**C**

## **CULTIVATE Comprehensive health equity science**

CDC will embed health equity principles in the design, implementation, and evaluation of its research, data, surveillance, and interventions strategies.

**O**

## **OPTIMIZE interventions**

CDC will use scientific, innovative and data-driven intervention strategies that address environmental, place-based, occupational, policy and systemic factors that impact health outcomes and address drivers of health disparities.

**R**

## **REINFORCE and expand robust partnerships**

CDC will seek out and strengthen sustainable multi-level, multi-sectoral and community partnerships to advance health equity.

**E**







## **ENHANCE capacity and workforce engagement**

CDC will build internal capacity to cultivate a multi-disciplinary workforce and more inclusive climates, policies, and practices for broader public health impact.

<https://www.cdc.gov/healthequity/core/index.html>



# Health Equity Science Key Principles

-  Conduct health equity science for action
-  Emphasizes drivers of inequity
-  Clarify uses of race and ethnicity
-  Promote the visibility of groups that may be inadequately represented
-  Use appropriate measures
-  Incorporate an understanding of the contexts that contribute to health inequities



# Include Health Equity Indicators in National Goals

- A focus on the social determinants of health (SDOH) acknowledges:
  - The need to address factors that are root causes of disease.
  - The importance of achieving health equity.
  - Practical considerations related to national prosperity and security.

				
Economic Stability	Education	Health and Health Care	Neighborhood and Built Environment	Social and Community Context
<ul style="list-style-type: none"> <li>■ Poverty</li> <li>■ Employment</li> <li>■ Housing stability</li> <li>■ Food insecurity</li> </ul>	<ul style="list-style-type: none"> <li>■ High school graduation rates</li> <li>■ Enrollment in higher education</li> <li>■ Early childhood education/development</li> <li>■ Language/literacy</li> </ul>	<ul style="list-style-type: none"> <li>■ Access to health services</li> <li>■ Access to primary care</li> <li>■ Health literacy</li> </ul>	<ul style="list-style-type: none"> <li>■ Quality of housing</li> <li>■ Crime and violence</li> <li>■ Environmental conditions</li> <li>■ Access to healthy foods</li> </ul>	<ul style="list-style-type: none"> <li>■ Social cohesion</li> <li>■ Discrimination</li> <li>■ Civic participation</li> <li>■ Incarceration</li> </ul>



# Flagship Global Programs – CDC Delivers Results

CDC is a leading co-implementer of U.S. flagship global health programs focused on the most vulnerable populations, saving millions of lives worldwide



## PEPFAR

From 2018 through 2021, CDC efforts accounted for well over 50 percent of key outcomes attributed to the President's Emergency Plan for AIDS Relief to treat and prevent HIV and TB



## Polio Eradication

CDC is the U.S. government's overall scientific lead in the Global Polio Eradication



## Malaria

CDC provides scientific leadership and conducts innovative research to fight malaria worldwide. CDC co-implements the President's Malaria Initiative (PMI), with CDC Resident Advisors in every PMI country.



## Global Health Security

CDC co-leads implementation of the Global Health Security Agenda (GHSA) since its inception.

# Guiding Principles for Implementing Health Equity into CDC's Global Work



# Health Equity Guiding Principles for Inclusive Communication

- Best practices to address all people inclusively, accurately, and respectfully





## Connect With Us!

- *Health Equity Matters*: quarterly e-newsletter that shares news, perspectives, and progress related to minority health and health equity. <https://www.cdc.gov/minorityhealth/newsletter.html>
- *Health Matters for Women*: monthly e-newsletter that provides information on what is happening in women's health around CDC and other agencies. <https://www.cdc.gov/women/newsletter/index.htm>
- *Conversations in Health Equity*: blog devoted to increasing awareness of health inequities and promoting national, state, and local efforts to reduce health disparities and achieve health equity. <https://blogs.cdc.gov/healthequity/>
- Engage with us on Twitter **@CDCHealthEquity** and LinkedIn **@CDCComhhe**.





Let's work together to  
achieve health equity.



For more information, contact CDC  
1-800-CDC-INFO (232-4636)  
TTY: 1-888-232-6348 [www.cdc.gov](http://www.cdc.gov)

The findings and conclusions in this report are those of the authors and do not necessarily represent the official position of the Centers for Disease Control and Prevention.



IANPHI  
**ANNUAL MEETING**

NOVEMBER 30 - DECEMBER 2, 2022 | HYBRID

HOSTED BY



Rüdiger Krech,  
Director, Department of Health  
Promotion, World Health  
Organization

Friday, December 2

# How to Mobilize Health Promotion Actions

**Mesay Hailu,**  
Director, Ethiopian Public Health Institute

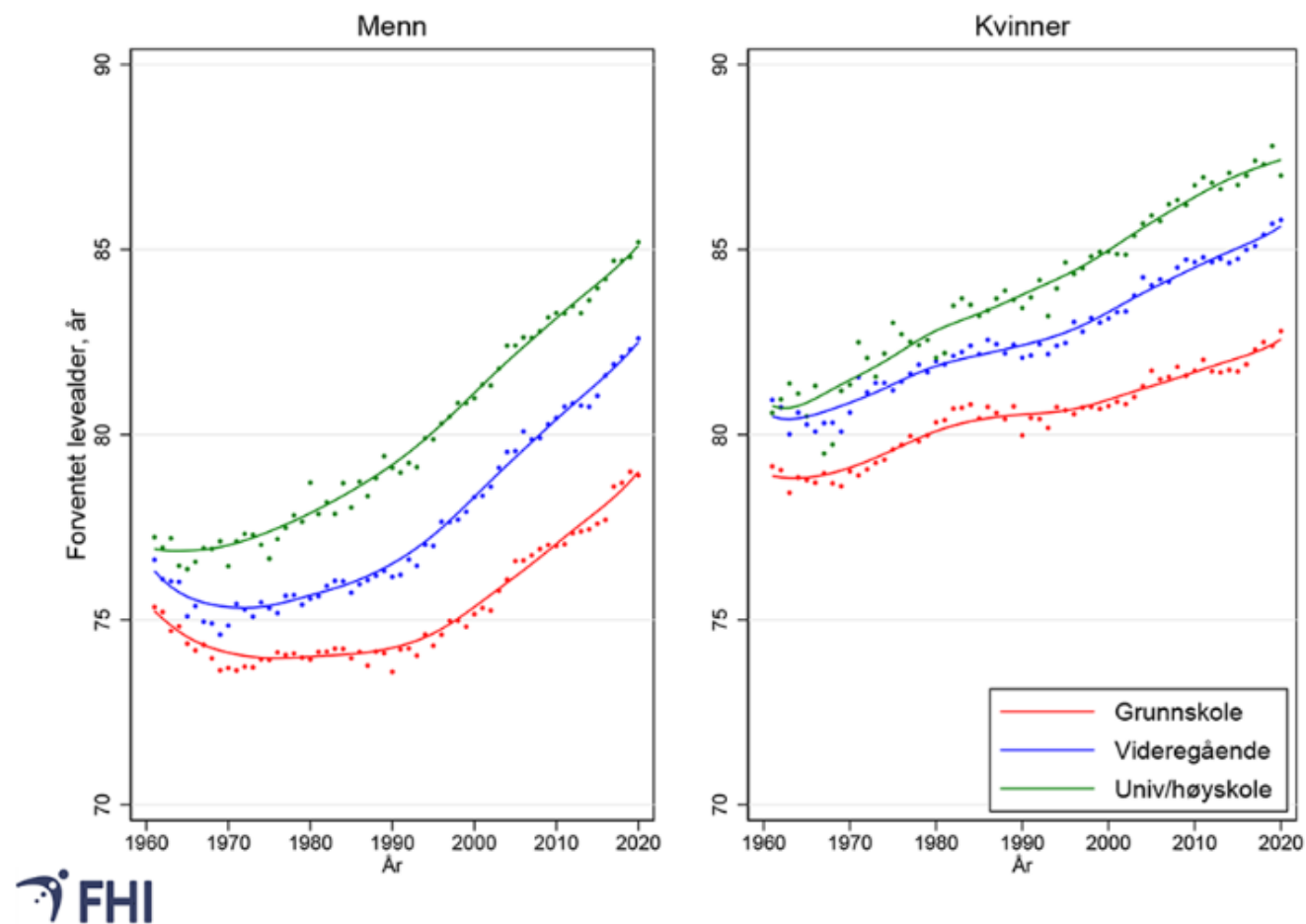
**Markku Tervahauta,**  
Director, Finnish Institute for Health and  
Welfare Organization

**Fernando de Almeida,**  
President, Instituto Nacional de Saúde  
Dr. Ricardo Jorge (INSA) of Portugal

**Lisette Navas,**  
Director, Instituto Costarricense de  
Investigación y Enseñanza en Nutrición  
y Salud (INCIENSA) of Costa Rica

Friday, December 2

# Roundtable Discussion

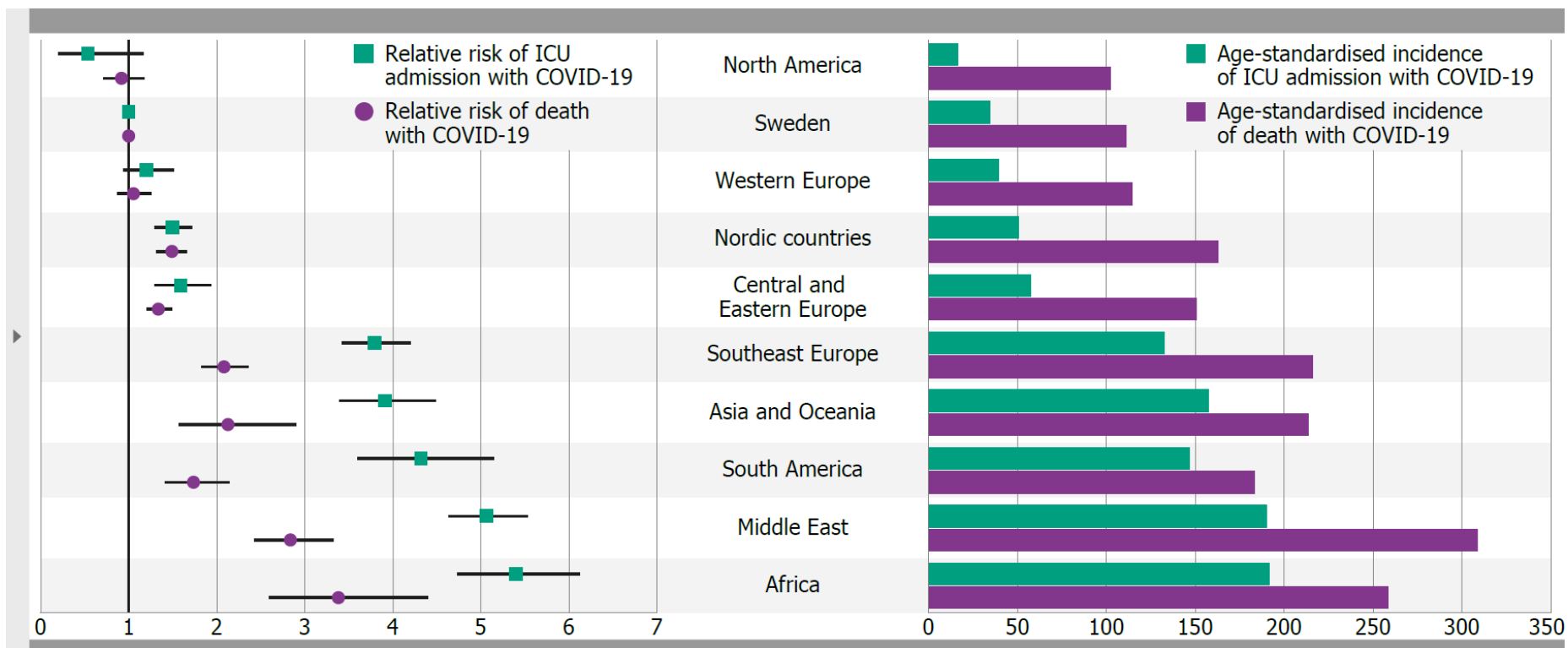


Figur 5. Forventet levealder (ved 35 år) i Norge etter utdanningsnivå, 1961-2020. Kilde: 1961-1989: Steingrimsdottir mfl. (2012), lett modifisert. 1990-2020: FHI (2022b).



IANPHI  
ANNUAL MEETING

NOVEMBER 30 - DECEMBER 2, 2022 | HYBRID



Vaccine uptake according to socioeconomic position in age 18+

