

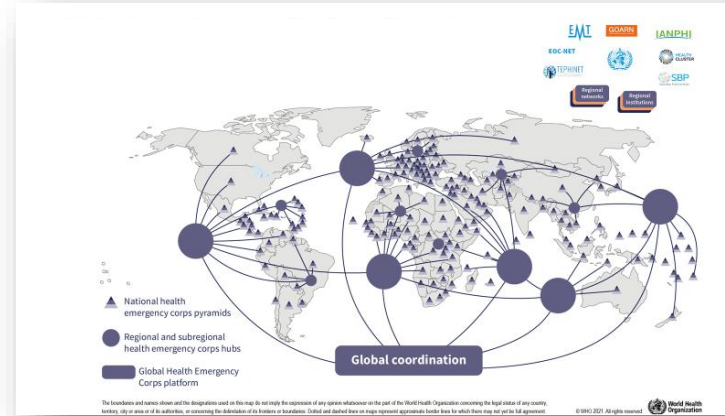
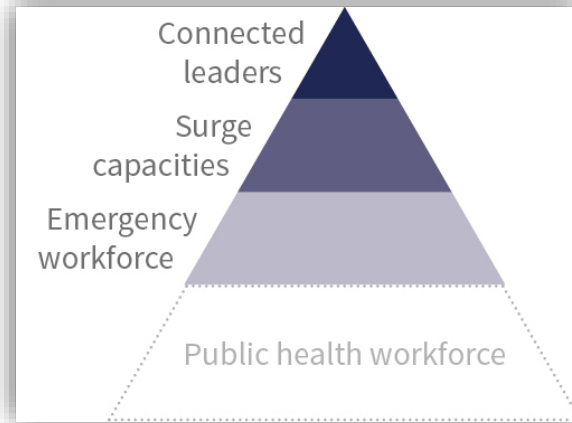
Global Health Emergency Corps NPHIs Are Vital

IANPHI Annual Meeting, April 2025



GHEC| What is it?

The body of experts in ministries and agencies in every country who work on health emergencies ...



... and the global ecosystem through which they coordinate.

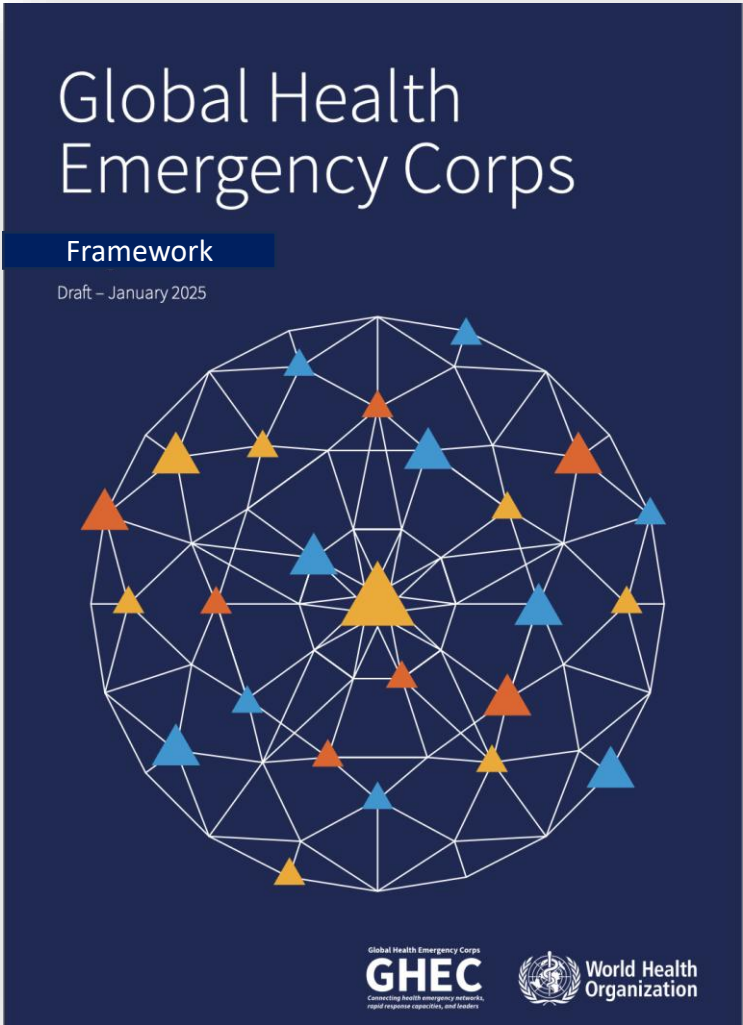
Sovereignty

Equity

Solidarity

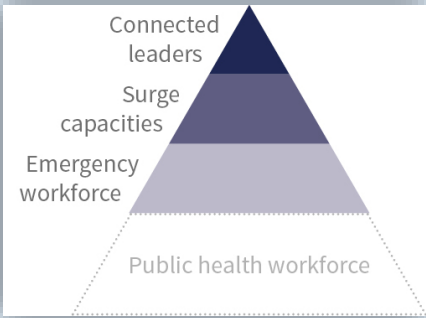
Guiding principles

GHEC| The Framework



Developed by the GHEC Design Group in 2024, this document sets the guiding principles, core components and suggested actions for strengthening emergency workforce structures and coordination within and across countries.

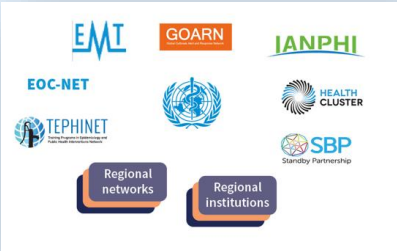
Suggests a structure to strengthen national health workforces for countries to adopt and adapt



Embraces an approach to coordination across the core health emergency capability areas



Identifies the ecosystem of health emergency networks through which countries collaborate





Welcome to Exercise Polaris!

3–4 April 2025



EXERCISE – EXERCISE – EXERCISE



Exercise Polaris | Aim and objectives

Aim

Simulate and test a coordinated response to a globally evolving health threat, engaging the existing health emergency workforce and coordination structures under the Global Health Emergency Corps (GHEC) framework.

Objectives

- ✓ To practice sharing of information between countries
- ✓ To raise awareness and exercise coordinated activation of expertise and surge capacities available to countries
- ✓ To stimulate coordinated leadership and decision-making on response strategies

Global Health Emergency Corps

A well-coordinated health emergency workforce centered in countries



17 countries

6 WHO regions

> 20 organizations and emergency networks

> 300 persons

Exercise Polaris – 3-4 April 2025

EXERCISE – EXERCISE – EXERCISE



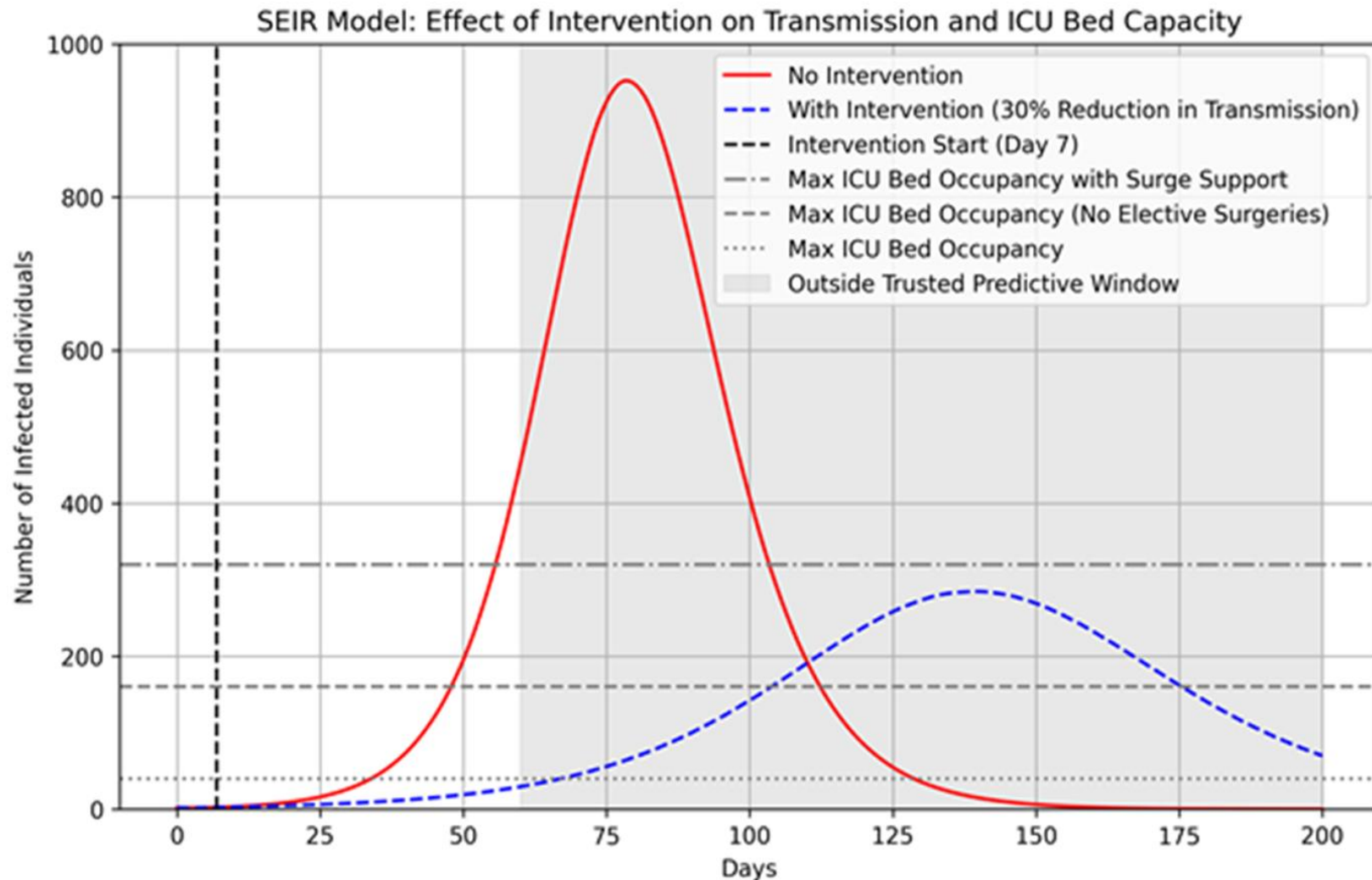
Exercise Polaris | Scenario

The rapid increase in global land and sea temperatures over the last 3 years has resulted in the **Arctic permafrost experiencing extensive melting**, leading to exposure of the remains of woolly mammoths and other ancient species that have been frozen in the ice.

A **multinational team of scientists**, support staff and a film crew embarked on an expedition in the Arctic, searching for prehistoric woolly mammoth remains. The team discovered a remarkably well-preserved woolly mammoth.



Exercise Polaris | Use of Artificial Intelligence and Modeling - Example



Initial (cruise ship) parameters

- R_0 2.0
- Serial interval 8 days
- 40% require Intensive Care
- 100 ICU beds, 80% occupied

What if?

- R_e reduced to 1.4
- ICU bed expansion
- Others

Next Steps for GHEC and NPHIs

- Regional simulation exercises
 - Modified from mammothpox model
 - Building on existing networks
- Country adoption and adaptation
 - Generative AI assistance
 - Adapting GHEC framework to unique national settings
 - Including transparent disease modeling
- Engaging and connecting NPHI leaders